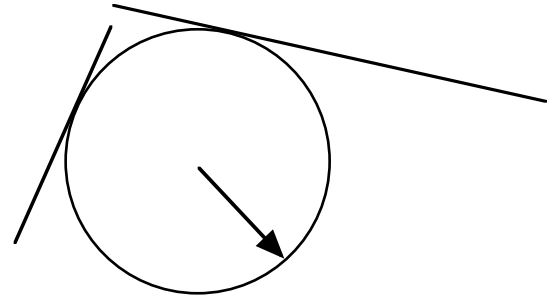


Uniformly Accelerated Particle Model

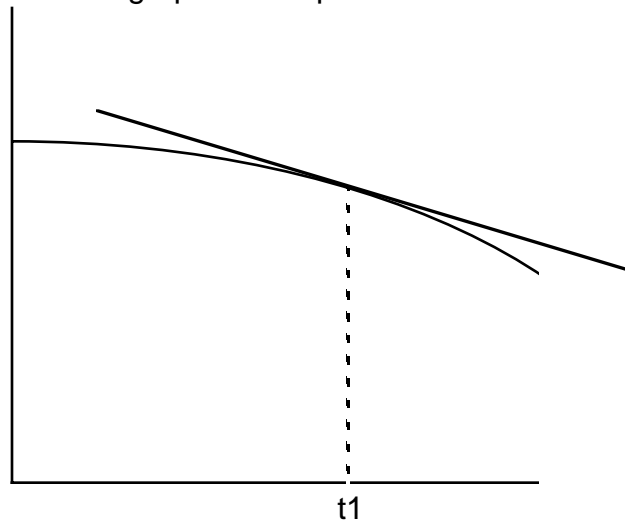
Tangents and Slopes of Tangent Lines

Recall that a tangent line touches a curve at just one point without crossing from one side of the curve to the other.

1. Draw a line tangent to the circle at the point indicated by the arrow.



Non-linear graphs cannot be described with just one slope. However, we can talk about instantaneous values of the slope by constructing a line tangent to the curve. The slope of the tangent tells us the slope of the graph at that point.



Draw tangents to each of the following curves at the times indicated.

